

Please write clearly in block capitals.

Centre number

--	--	--	--	--

Candidate number

--	--	--	--

Surname

Forename(s)

Candidate signature

I declare this is my own work.

A-level MATHEMATICS

Paper 1

Time allowed: 2 hours

Materials

- You must have the AQA Formulae for A-level Mathematics booklet.
- You should have a graphical or scientific calculator that meets the requirements of the specification.

Instructions

- Use black ink or black ball-point pen. Pencil should only be used for drawing.
- Fill in the boxes at the top of this page.
- Answer **all** questions.
- You must answer each question in the space provided for that question. If you need extra space for your answer(s), use the lined pages at the end of this book. Write the question number against your answer(s).
- Do **not** write outside the box around each page or on blank pages.
- Show all necessary working; otherwise marks for method may be lost.
- Do all rough work in this book. Cross through any work that you do not want to be marked.

Information

- The marks for questions are shown in brackets.
- The maximum mark for this paper is 100.

Advice

- Unless stated otherwise, you may quote formulae, without proof, from the booklet.
- You do not necessarily need to use all the space provided.

For Examiner's Use	
Question	Mark
1	
2	
3	
4	
5	
6	
7	
8	
9	
10	
11	
12	
13	
14	
15	
TOTAL	



Answer **all** questions in the spaces provided.

- 1** A curve is defined by the parametric equations

$$x = \cos \theta \quad \text{and} \quad y = \sin \theta \quad \text{where} \quad 0 \leq \theta \leq 2\pi$$

Which of the options shown below is a Cartesian equation for this curve?

Circle your answer.

[1 mark]

$$\frac{y}{x} = \tan \theta \quad x^2 + y^2 = 1 \quad x^2 - y^2 = 1 \quad x^2 y^2 = 1$$

- 2** A periodic sequence is defined by

$$U_n = (-1)^n$$

State the period of the sequence.

Circle your answer.

[1 mark]

$$-1 \quad 0 \quad 1 \quad 2$$

- 3** The curve

$$y = \log_4 x$$

is transformed by a stretch, scale factor 2, parallel to the y -axis.

State the equation of the curve after it has been transformed.

Circle your answer.

[1 mark]

$$y = \frac{1}{2} \log_4 x \quad y = 2 \log_4 x \quad y = \log_4 2x \quad y = \log_8 x$$



Turn over for the next question

*Do not write
outside the
box*

**DO NOT WRITE ON THIS PAGE
ANSWER IN THE SPACES PROVIDED**

Turn over ►



0 3

4 The graph of

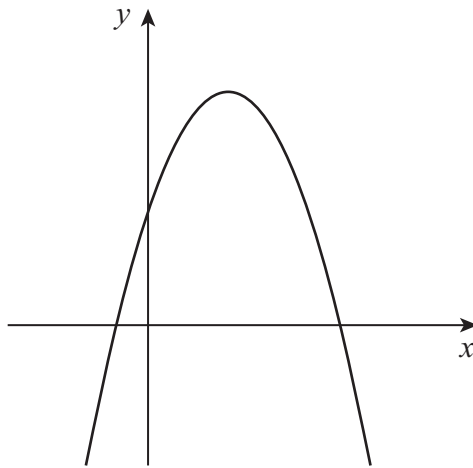
$$y = f(x)$$

where

$$f(x) = ax^2 + bx + c$$

is shown in **Figure 1**.

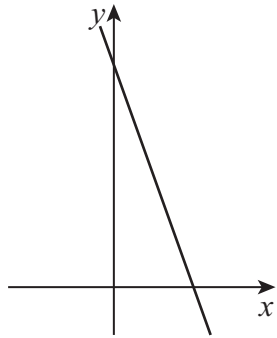
Figure 1

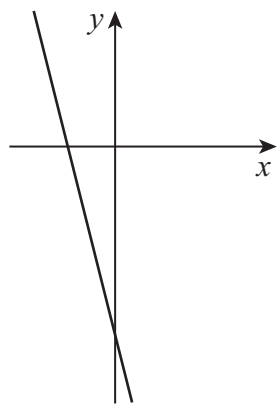


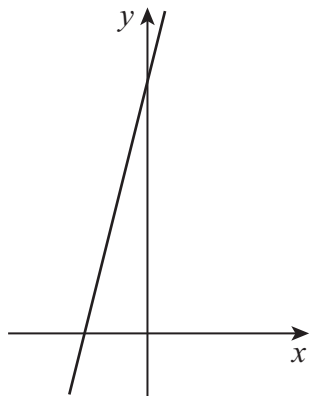
Which of the following shows the graph of $y = f'(x)$?

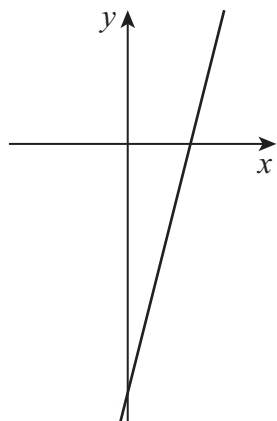
Tick (✓) **one** box.

[1 mark]









Turn over ►



5 Find an equation of the tangent to the curve

$$y = (x - 2)^4$$

at the point where $x = 0$

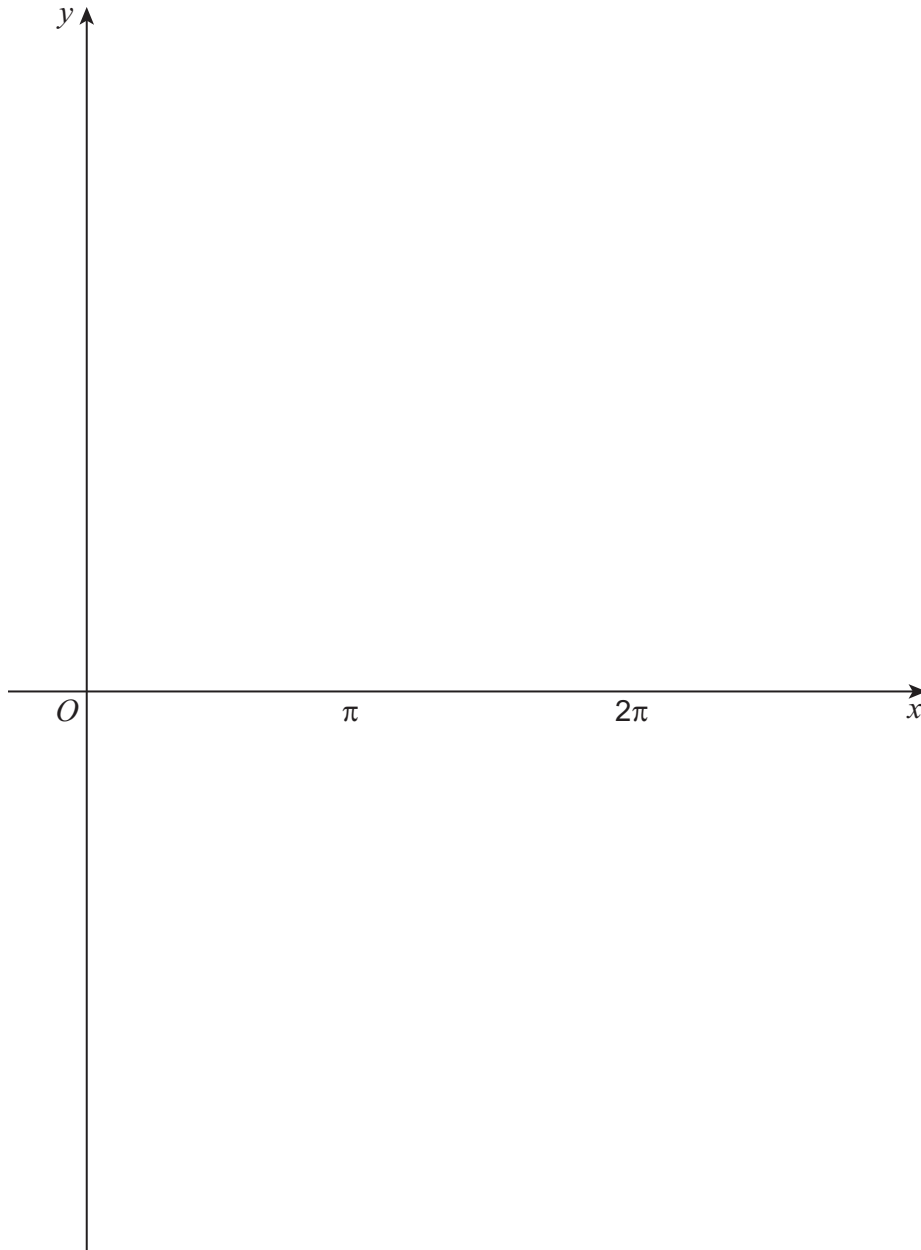
[3 marks]



7

Sketch the graph of

$$y = \cot\left(x - \frac{\pi}{2}\right)$$

for $0 \leq x \leq 2\pi$ **[3 marks]**

Turn over for the next question

*Do not write
outside the
box*

**DO NOT WRITE ON THIS PAGE
ANSWER IN THE SPACES PROVIDED**

Turn over ►



0 9

8 The lines L_1 and L_2 are parallel.

L_1 has equation

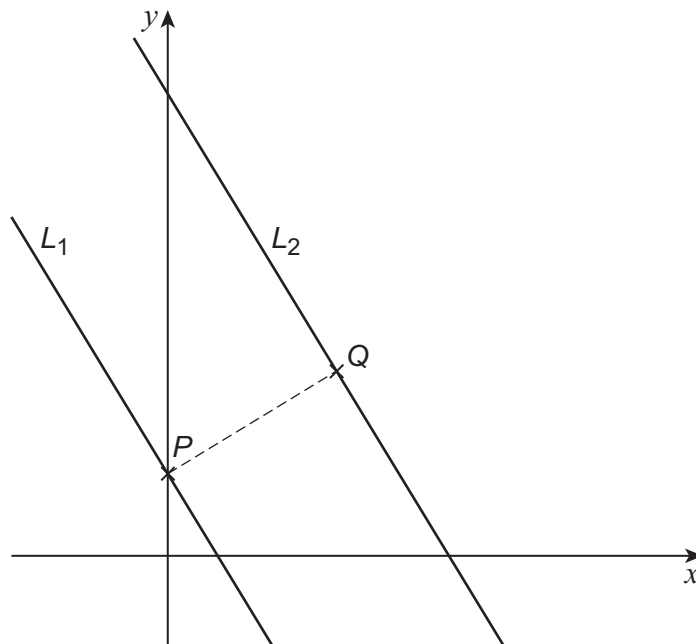
$$5x + 3y = 15$$

and L_2 has equation

$$5x + 3y = 83$$

L_1 intersects the y -axis at the point P .

The point Q is the point on L_2 closest to P , as shown in the diagram.



8 (a) (i) Find the coordinates of Q .

[5 marks]



Turn over for the next question

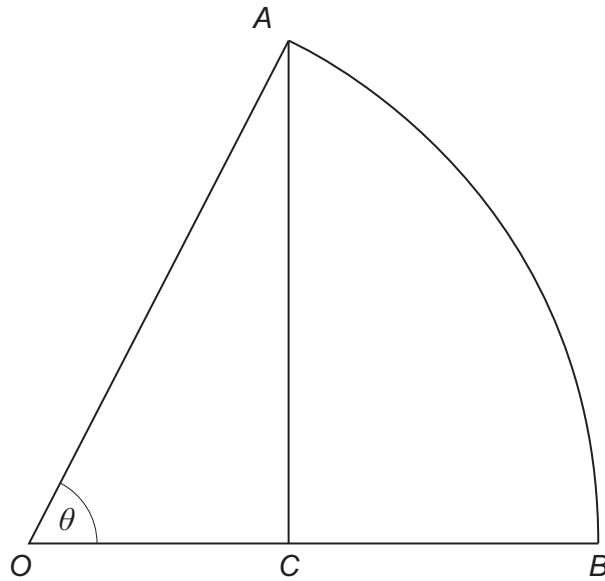
*Do not write
outside the
box*

**DO NOT WRITE ON THIS PAGE
ANSWER IN THE SPACES PROVIDED**

Turn over ►



- 10** The diagram shows a sector of a circle OAB .



The point C lies on OB such that AC is perpendicular to OB .

Angle AOB is θ radians.

- 10 (a)** Given the area of the triangle OAC is half the area of the sector OAB , show that

$$\theta = \sin 2\theta$$

[4 marks]



10 (c) The Newton-Raphson method is used to find an approximate solution to the equation

$$\theta = \sin 2\theta$$

10 (c) (i) Using $\theta_1 = \frac{\pi}{5}$ as a first approximation for θ apply the Newton-Raphson method twice to find the value of θ_3

Give your answer to three decimal places.

[3 marks]

10 (c) (ii) Explain how a more accurate approximation for θ can be found using the Newton-Raphson method.

[1 mark]



10 (c) (iii) Explain why using $\theta_1 = \frac{\pi}{6}$ as a first approximation in the Newton-Raphson method does not lead to a solution for θ .

[2 marks]

Turn over for the next question

Turn over ►



11 The polynomial $p(x)$ is given by

$$p(x) = x^3 + (b + 2)x^2 + 2(b + 2)x + 8$$

where b is a constant.

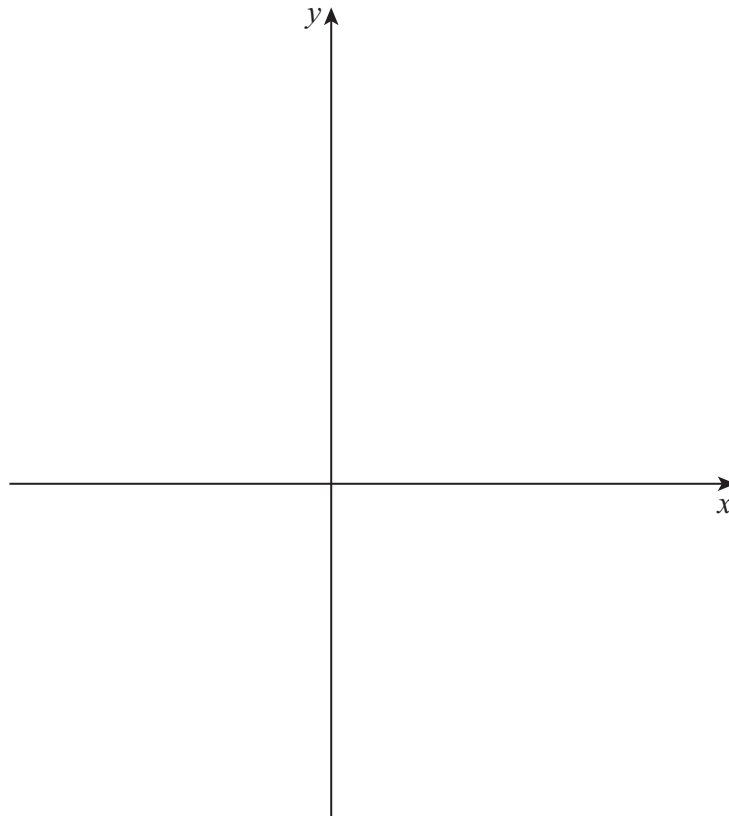
11 (a) Use the factor theorem to prove that $(x + 2)$ is a factor of $p(x)$ for **all** values of b .

[3 marks]

11 (b) The graph of $y = p(x)$ meets the x -axis at exactly two points.

11 (b) (i) Sketch a possible graph of $y = p(x)$

[3 marks]

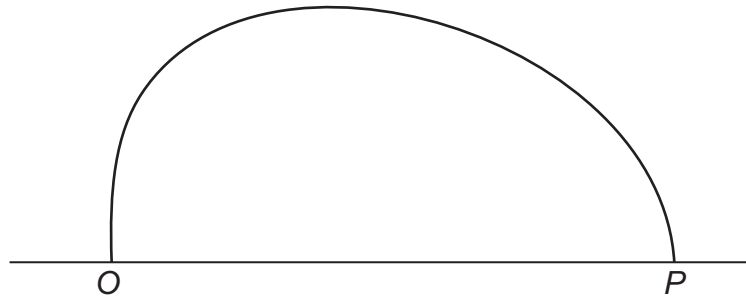


13

Figure 2 shows the approximate shape of the vertical cross section of the entrance to a cave. The cave has a horizontal floor.

The entrance to the cave joins the floor at the points O and P .

Figure 2



Garry models the shape of the cross section of the entrance to the cave using the equation

$$x^2 + y^2 = a\sqrt{x} - y$$

where a is a constant, and x and y are the horizontal and vertical distances respectively, in metres, measured from O .

13 (a) The distance OP is 16 metres.

Find the value of a that Garry should use in the model.

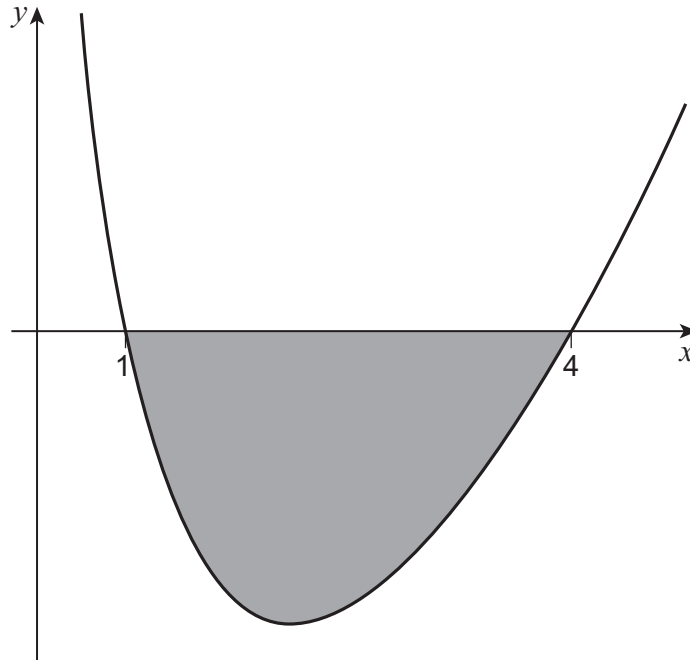
[2 marks]



14 The region bounded by the curve

$$y = (2x - 8) \ln x$$

and the x -axis is shaded in the diagram below.



14 (a) Use the trapezium rule with **5 ordinates** to find an estimate for the area of the shaded region.

Give your answer correct to three significant figures.

[3 marks]



14 (b) Show that the exact area is given by

$$32 \ln 2 - \frac{33}{2}$$

Fully justify your answer.

[6 marks]

Turn over ►



There are no questions printed on this page

*Do not write
outside the
box*

**DO NOT WRITE ON THIS PAGE
ANSWER IN THE SPACES PROVIDED**



There are no questions printed on this page

*Do not write
outside the
box*

**DO NOT WRITE ON THIS PAGE
ANSWER IN THE SPACES PROVIDED**

Copyright information

For confidentiality purposes, all acknowledgements of third-party copyright material are published in a separate booklet. This booklet is published after each live examination series and is available for free download from www.aqa.org.uk.

Permission to reproduce all copyright material has been applied for. In some cases, efforts to contact copyright-holders may have been unsuccessful and AQA will be happy to rectify any omissions of acknowledgements. If you have any queries please contact the Copyright Team.

Copyright © 2022 AQA and its licensors. All rights reserved.



3 6

Jun22/7357/1



2 2 6 A 7 3 5 7 / 1