

TEST ONE

This tally chart shows the number of people who entered a shopping centre during a 5 minute period one day. Complete the table to show the number of women, boys and girls.

	Number of People	Total
Men		11
Women		
Boys		
Girls		

- 1
- 2
- 3

4 How many children went to the centre?

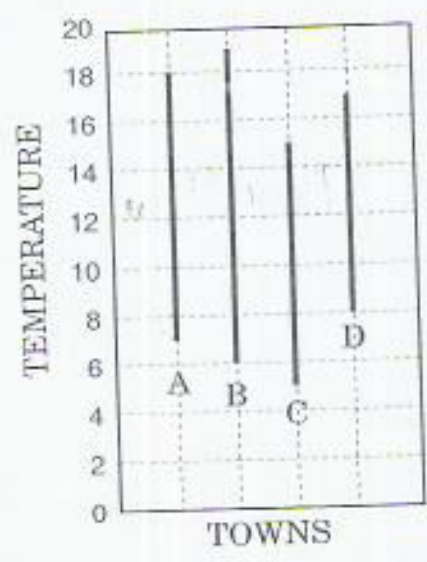
Ans                      children

5 How many adults?

Ans                      adults

6 How many more women than men?

Ans                      women



This graph shows the maximum and minimum temperatures, measured in degrees celsius, for 4 towns A,B,C and D for the same day.

7 Which town had the lowest temperature that day?

Ans                     

8 Which town had the highest temperature?

Ans                     

9 Which town had the biggest difference in temperature?

Ans                     

10 Which town had the smallest difference in temperature?

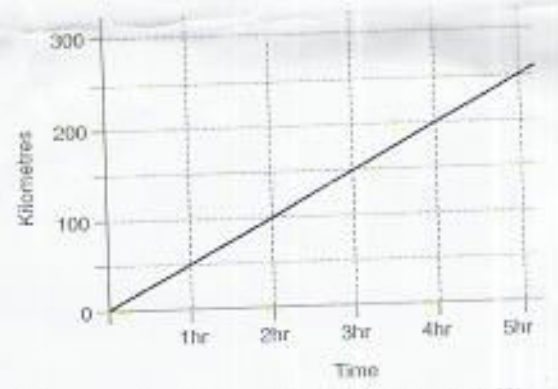
Ans                     

11 How many towns were hotter than 17°C?

Ans                     

12 How many towns were colder than 8°C?

Ans                     



The graph above shows a car travelling at a steady speed. Read from the graph how many km the car travels in-

- 13 30 min            km
- 14 2hr            km
- 15 3 1/2 hr            km
- 16 4 1/2 hr            km

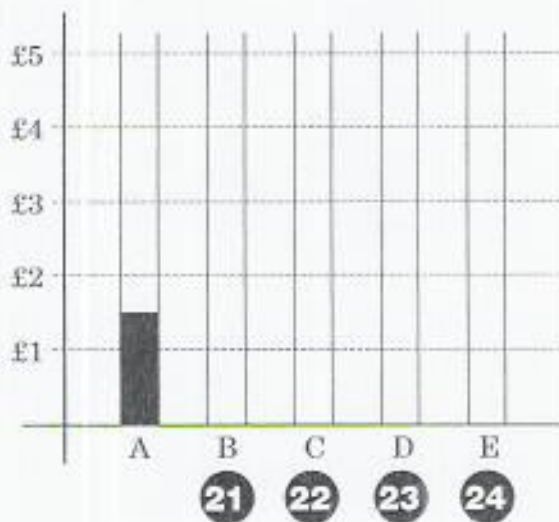
How long will it take the car to travel?

- 17 75 km            hr            min
- 18 100 km            hr            min
- 19 125 km            hr            min
- 20 250km            hr            min

The table shows the amount of pocket money given to five children - A,B,C,D and E.

Child	A	B	C	D	E
Money	£1.50	£4.00	£2.50	£4.50	£2.50

Complete the bar chart to show how much each child received.



25 Draw a line across the graph to show the average.

26 What was the average amount received?

Ans £ \_\_\_\_\_

27 How many children received more than the average amount?

Ans \_\_\_\_\_

The timetable shows the times of buses from Pipton to Stenup and also of buses travelling in the opposite direction.

OUTWARD			RETURN	
07.15	15.30	Pipton	12.55	20.40
07.50	16.05	Batley	12.20	20.05
08.15	16.30	Carslow	11.55	19.40
08.55	17.10	Radford	11.15	19.00
09.40	17.55	Stenup	10.30	18.15

28 At what time does the 15.30 bus from Pipton arrive in Radford? \_\_\_\_\_

29 When does the 10.30 bus from Stenup arrive at Carslow? \_\_\_\_\_

30 How long does it take to travel from Pipton to Stenup? \_\_\_\_\_ hr \_\_\_\_\_ min

31 How long does it take to go from Radford to Batley? \_\_\_\_\_ hr \_\_\_\_\_ min

32 Four buses stop at Carslow each day. When could I board the second bus there? \_\_\_\_\_

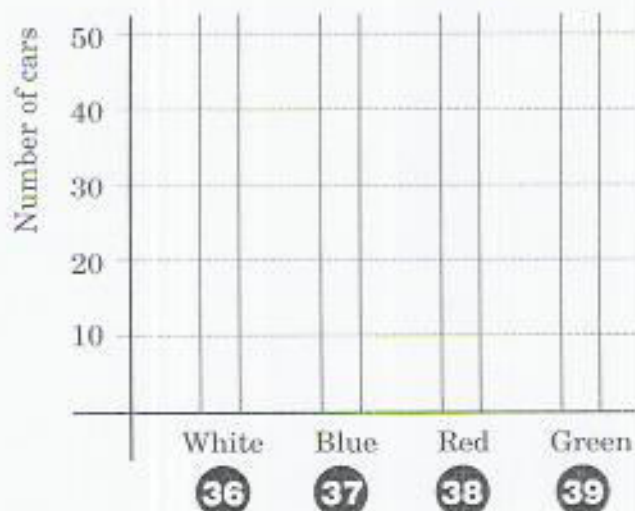
33 If the 11.15 from Radford is running 15 minutes late, when will I arrive at Batley? \_\_\_\_\_

34 A man living in Stenup has an appointment in Batley at 13.15. Which bus, from Stenup must he take to arrive on time for his appointment?

Ans \_\_\_\_\_

35 If I travel from Batley to Stenup on the first bus and return on the last bus, at what time will I arrive back at Batley? \_\_\_\_\_

The pie chart shows the colours of 120 cars parked in a car park. Show the same information on the bar chart below.



State the number of cars of each colour.

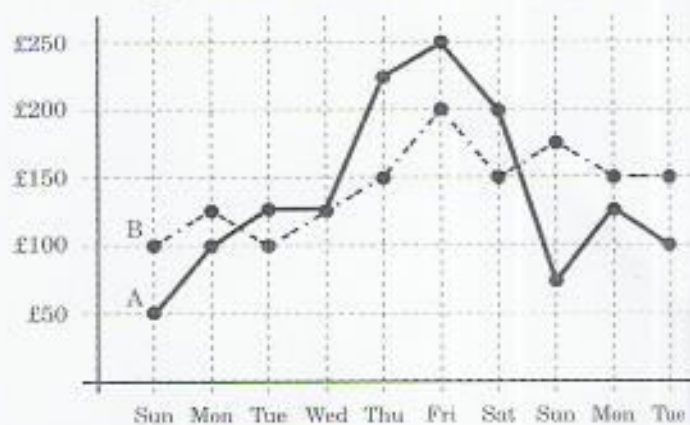
40 White cars \_\_\_\_\_

41 Blue cars \_\_\_\_\_

42 Red cars \_\_\_\_\_

43 Green cars \_\_\_\_\_

The graph shows the daily takings of two shops, A and B, over a ten day period.



44 How much was lifted by shop A on the first Tuesday? £ \_\_\_\_\_

45 How much was lifted by shop B on the Thursday? £ \_\_\_\_\_

46 On which day did both shops lift the same amount?

Ans \_\_\_\_\_

47 What was the total lifted by shop B on the two Sundays? £ \_\_\_\_\_

48 What was the total lifted by shop A on the two Mondays? £ \_\_\_\_\_

49 On which day of the week were both shops the busiest?

Ans \_\_\_\_\_

50 What is the difference between shop A's lowest and highest takings?

Ans £ \_\_\_\_\_